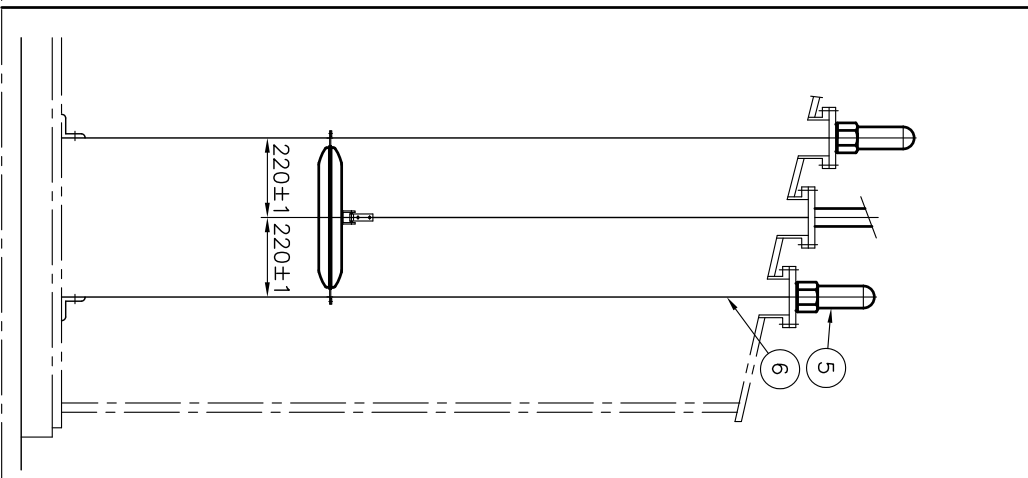


η^2 

DESIGN DATA	
—	kg/Cm ²
0.2	kg/Cm ²
—	°C
-20 ~ 100	°C
—	mm
6000	mm


NOTES

	K.T.	C.S	1			
	304SS	1	40A(1-1/2")			
	304SS	1	OUT OF SCOPE			
	K.T	C.S	1			
	C.S	1				
	316SS	1	Ø3			
	AC2B	1	PT 1-1/2"			
	316SS	1				
	316SS	1	PT 1-1/2"			
	30W	1	PT 1-1/2"			
	PE	316SS	1	13Wx0.13t		
	ADIC12	1	-			
	MATERIAL	QTY	SPECIFICATION	REMARK		

BILL OF MATERIAL

1

TANK LEVEL TRANSMITTER I-SEAL (SOCKET TYPE) INSTALLATION DRAWING


SeoJin Instech Co., Ltd.

EMP CODE	Work Order No.	REV.
-	-	

SJ-M021-DWG-AP106